

How to get set up to work with the Information Framework (SID) Project Team

This section describes initial setup activities for team members working in a SID domain team.

Each team working on a project related to the SID will get a branch of the SID with an url in the following format: <https://collab.tmforum.org/svn/repos/sidmodels/SID%20Models/branches/XXX> where XXX is the code of the project.

This branch will be forked from the SID trunk at the time the branch is requested.

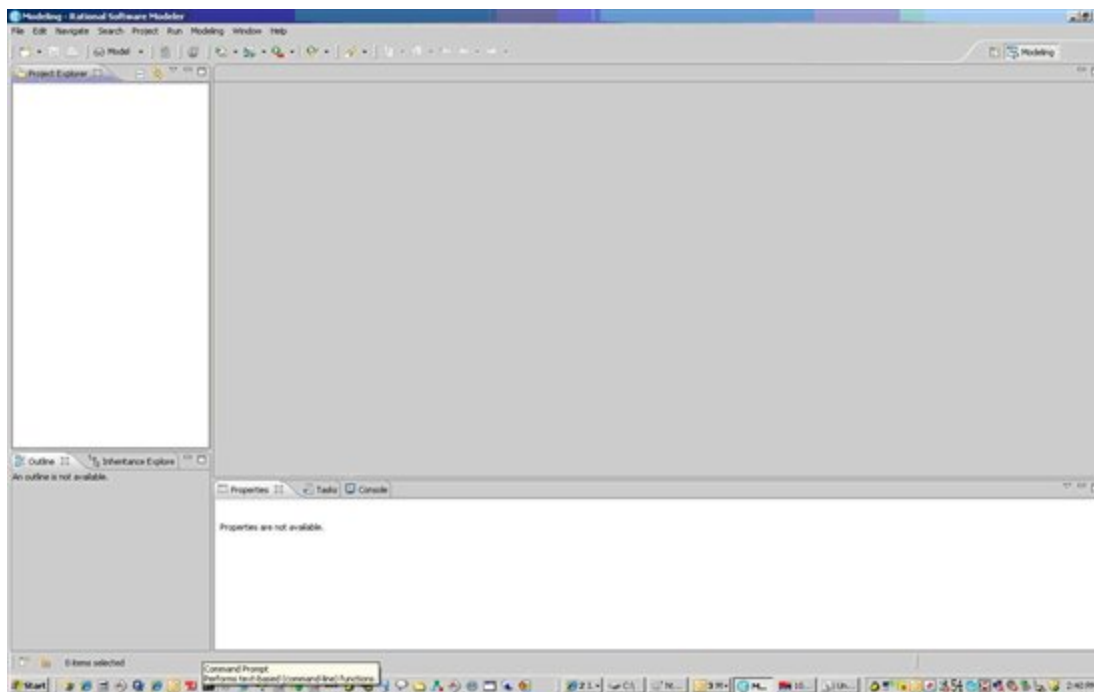
Never edit directly the SID trunk. This is strictly forbidden for projects.

This branch will have to be merged back at the end of the project. The merge is handled by the SID leads and requires the project to fill a SID CR.

Note: As of March 11, 2013, the https version of the link should be used.

The setup steps below will use PM as example: <https://collab.tmforum.org/svn/repos/sidmodels/SID%20Models/branches/SID13-Thresholding>

1) Start with an empty workspace in RSA. Do NOT create any projects.



2) Open the SVN perspective (Windows-> Open Perspective, select others if it does not show up).

3) Create a new repository location (right button New in explorer). Enter the model repository URL for your domain team (<https://collab.tmforum.org/svn/repos/sidmodels/SID%20Models/branches/XXX>), along with your TM Forum username and password. Note that saving the password is recommended to avoid entering it at each operation.

New Repository Location

Enter Repository Location Information

Define the SVN repository location information. You can specify additional settings for proxy and svn+ssh, https connections.

General | Advanced | SSH Settings | SSL Settings

URL: Browse...

Label

☐ Use the repository URL as the label

☒ Use a custom label:

Authentication

User:

Password:

☒ Save authentication (could trigger secure storage login)

To manage your security data, please see ["Secure Storage"](#)

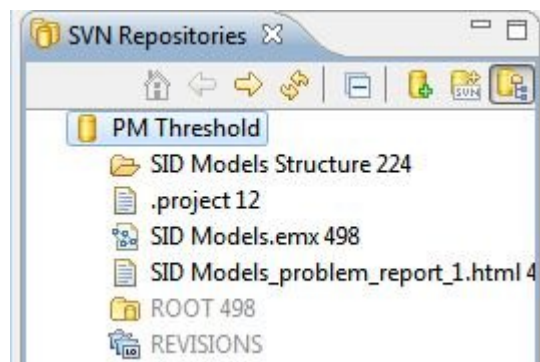
Show Credentials For:

☒ Validate Repository Location on finish

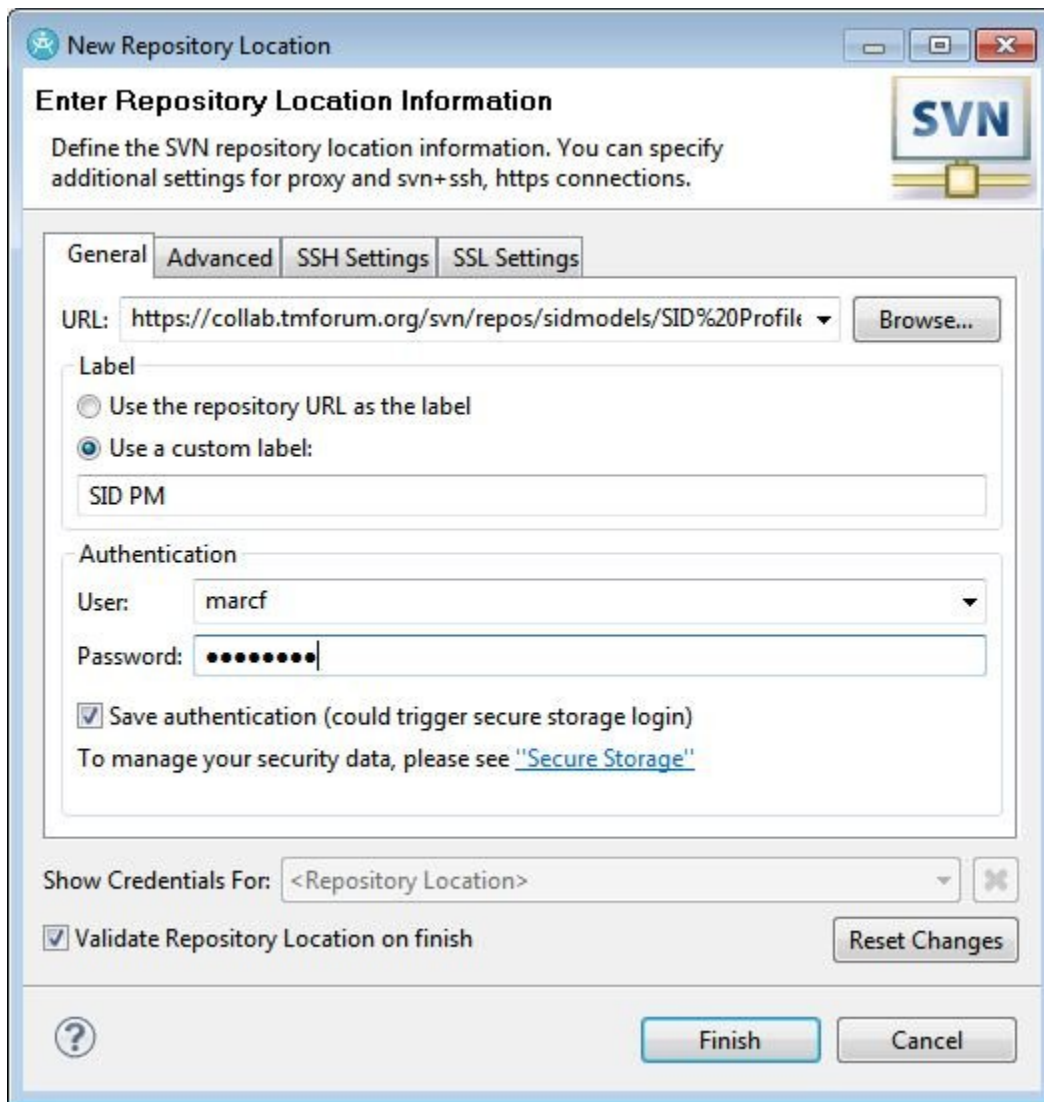
Reset Changes

Finish Cancel

4) The new repository location appears



5) Create another new repository location using the URL for the profile repository using the url <https://collab.tmforum.org/svn/repos/sidmodels/SID%20Profiles/trunk/SID%20Profiles> This URL will be the same for all SID domain teams.

The image shows a 'New Repository Location' dialog box with a title bar containing a question mark icon and standard window controls. The main title is 'Enter Repository Location Information'. Below this is a descriptive text: 'Define the SVN repository location information. You can specify additional settings for proxy and svn+ssh, https connections.' To the right of the text is an 'SVN' logo. The dialog has four tabs: 'General' (selected), 'Advanced', 'SSH Settings', and 'SSL Settings'. In the 'General' tab, there is a 'URL' field with the text 'https://collab.tmforum.org/svn/repos/sidmodels/SID%20Profile' and a 'Browse...' button. Below the URL is a 'Label' section with two radio buttons: 'Use the repository URL as the label' (unselected) and 'Use a custom label:' (selected). A text field below the radio buttons contains 'SID PM'. The 'Authentication' section has a 'User' dropdown menu with 'marcf' selected and a 'Password' field with masked characters. There is a checked checkbox for 'Save authentication (could trigger secure storage login)' and a link to 'Secure Storage'. At the bottom, there is a 'Show Credentials For:' dropdown menu with '<Repository Location>' selected, a checked checkbox for 'Validate Repository Location on finish', and a 'Reset Changes' button. The bottom of the dialog features a help icon, a 'Finish' button, and a 'Cancel' button.

New Repository Location

Enter Repository Location Information

Define the SVN repository location information. You can specify additional settings for proxy and svn+ssh, https connections.

SVN

General | Advanced | SSH Settings | SSL Settings

URL: Browse...

Label

☐ Use the repository URL as the label

☒ Use a custom label:

Authentication

User:

Password:

☒ Save authentication (could trigger secure storage login)

To manage your security data, please see ["Secure Storage"](#)

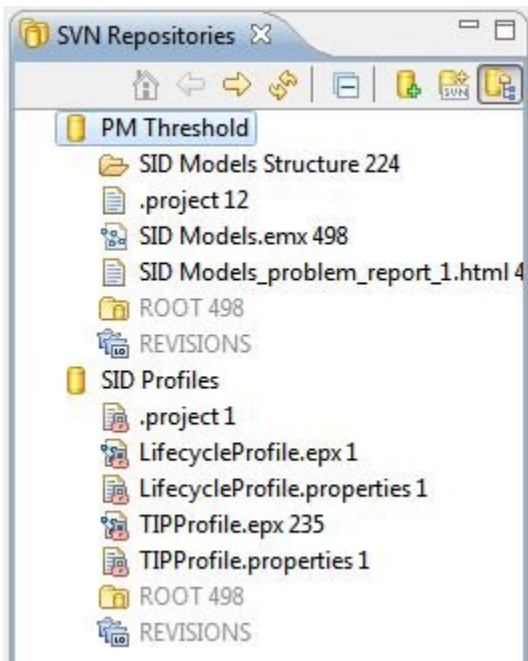
Show Credentials For:

☒ Validate Repository Location on finish

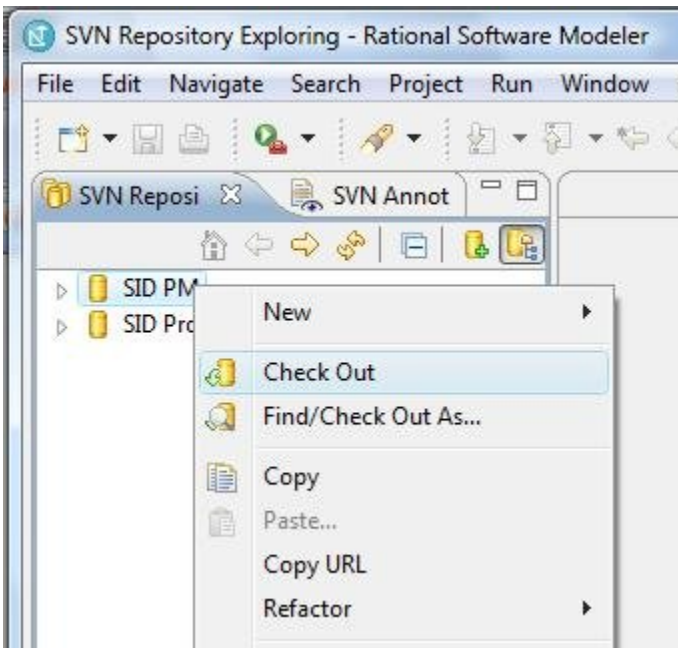
Reset Changes

Finish Cancel

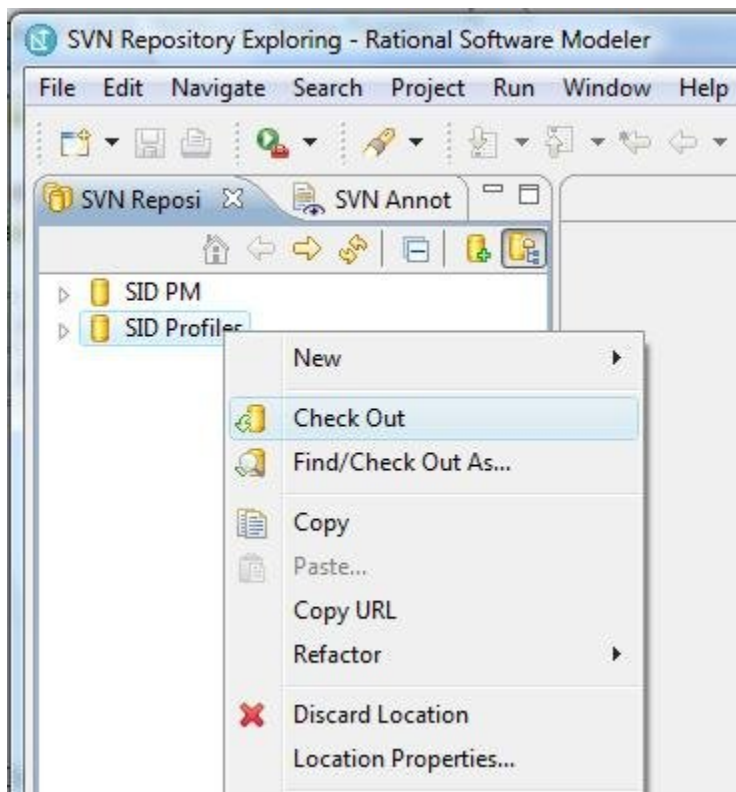
6) Your SVN perspective should now show two repository locations.



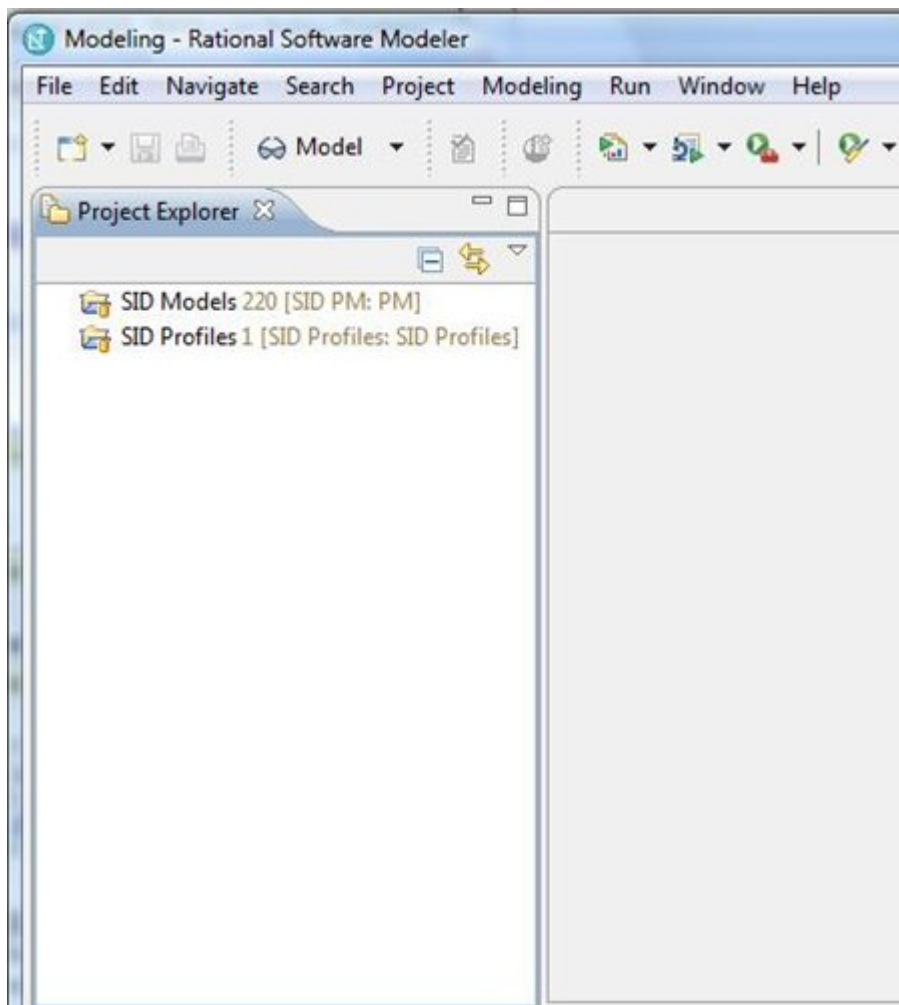
7) Right click on the first repository location and select Check Out (or find/Check Out as... if you want to change the project name).



8) Do the same with the profile repository location.



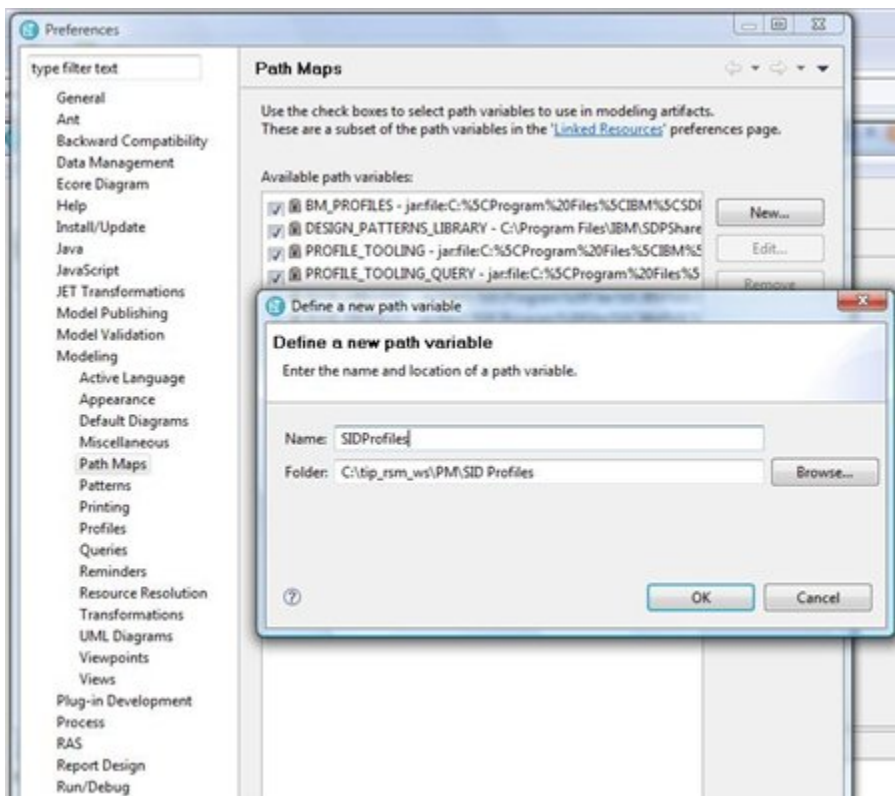
9) **DO NOT expand the model project yet.** Switch back to the original model perspective using the toggle in the upper right tab. Two new projects appear, one for the model and one for the profiles.



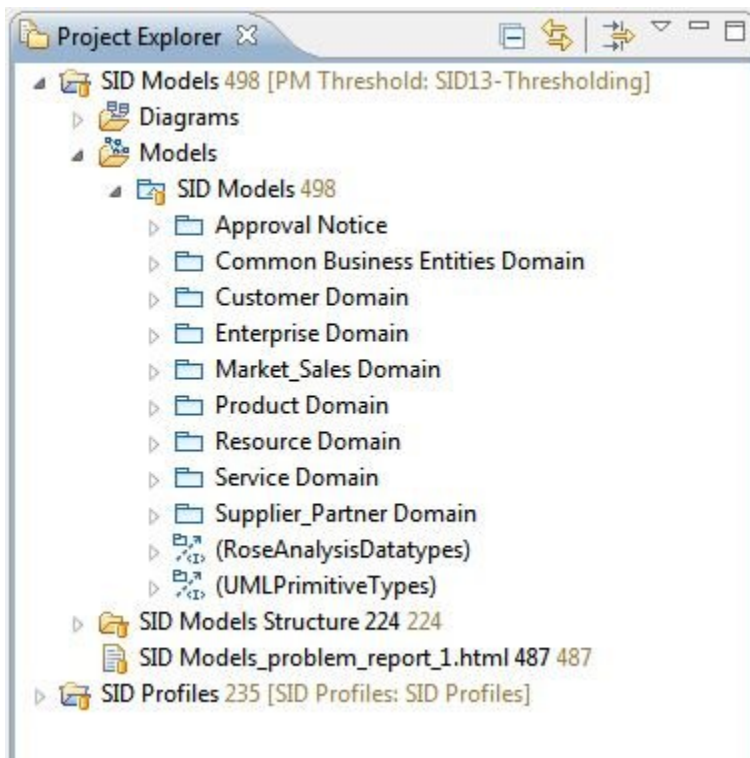
10) Select Window...Preferences...Modeling...Path Maps and create a new path map variable named **SIDProfiles** and with a value containing the file system path including your workspace and the SID Profiles directory that was just created. Look it up in the file system explorer to be sure. Click OK when finished.

Important notes:

1. If for instance your RSA workspace is C:/tip_rsm_ws/XXX for your XXX project, so the folder name is C:/tip_rsm_ws/XXX/SID Profiles
2. Note that there is no blank in name, but blank in folder name between SID and Profiles
3. This step cannot be done before step 8, as otherwise the SID Profiles directory won't exist and this step will fail



11) Expand the model project and the model. The model should appear with no red error flags or popup error messages.



If you have errors, it might be due to a wrong setup of your path map variable. In this case, delete the 2 projects and start back at step 7. Be sure your path map variable has the name SIDProfiles

Another case of errors might be linked to Rose datatypes. If the error indicates the "RoseAnalysisDatatypes::Xxxx" cannot be found, then the Rational Rose model import feature was not installed when installing RSA. Go back to the [Installing RSA for SID use](#) page and re-install RSA.

**SID Set Up Tip**

If you have a strange message like "repository moved permanently" trying to creating a new repository location for SID Profiles, you might have trouble with your proxy.

Use https instead of http.